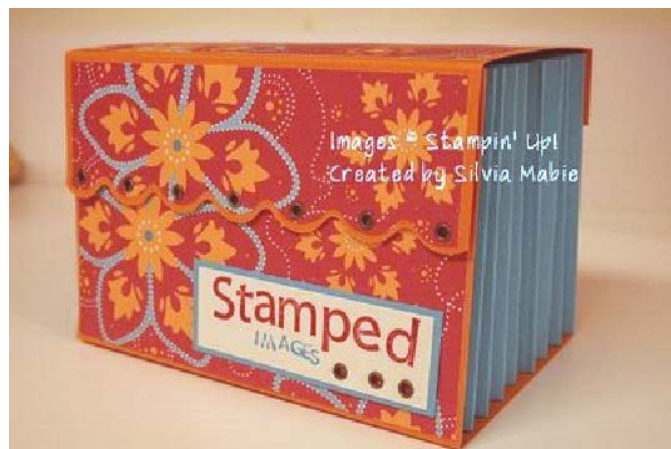


Stamped Images File Folder

Silvia Mabie © 2008
All Rights Reserved



Supplies:

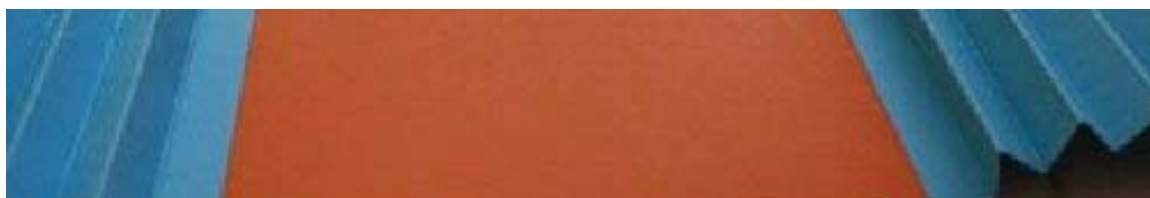
1- cardstock 6x12 (here pumpkin pie)
1- cardstock 6x7 (here pumpkin pie)
1- sheet of designer paper (here bali breeze)
2- sheets of cardstock measuring 4x8.75 (here tempting turquoise)
8- sheets of cardstock measuring 6x 3 5/8 (here Sahara Sand)
1- piece cardstock 6" x 3 3/4" reinforcement for lid
strong adhesive like Zip Dry or Scor-Tape
Stamps and embellishments
Magnets

Step 1: Score 6" x 12" at 4" and 8".

Step 2: Score 6" x 7" piece at 1" and 5".

Step 3. Adhere the 1" section to the inside edge of the 12" length to create one long piece of paper 6" x 18".

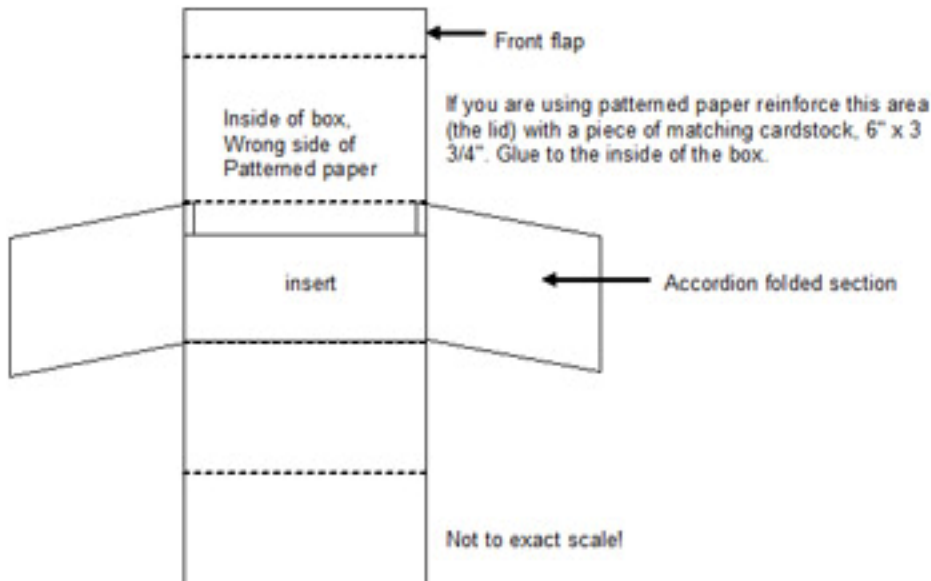
Step 4: The two pieces that measure 4" x 8 3/4" will be scored at every half inch but you **MUST** alternate the scores as you are making mountains and valley folds. Score at 1/2", 1 1/2", 2 1/2", 3 1/2" etc across the cardstock. Flip the cardstock from top to bottom, keeping the left edge in the same orientation, score at 1", 2", 3", 4" etc across the cardstock. Look for the first indentation, fold so the indentation is on the **OUTSIDE** of the fold, bump on the inside. Accordion pleat both pieces.



Step 5: Glue the back part of each accordion piece to the third section of the long length of cardstock/patterned paper (back of a valley). Use **STRONG** adhesive.



Step 6: You will progressively move forward gluing in your inserts. They are glued to the front of the mountain as is indicated by the arrow. Glue one insert at a time so that you end up in the same place of the accordion fold on both sides. The small flap should be facing away from you. Glue cards in the position I have shown, even with the bottom of the accordion fold No they are not the full height of the accordion.



Step 7: Glue last flap of accordion fold to the front of the box. For my closure I decided to use magnets...they aren't as clingy as the velcro so the box doesn't get damaged when I try to open it. You can cut up magnetic business cards or use the magnets by Basic Grey. Further embellish as you wish.

Diana: I have made a number of these for my friends. I taught a class and everyone loved it! If you are using the smaller magnets attach them near the edges of the front piece rather than the middle. To be sure my magnets stuck <g>, I didn't rely on the adhesive that is on the back of the magnets, I attached both bottom ones, the ones on the box with Crystal effects and left them to dry for at least 4 hours. Then I did the lid ones also with Crystal effects.

Be sure to include a few stamped images if it is going to be a gift. Enjoy!