

# "Lexicon of Love" Playing Cards Gift Box

Leslie Miller© 2008  
All Rights Reserved



## Supplies

Scor-Pal®

Cardstock 5 3/4" x 7"

Decorator paper 2 3/8" x 3 3/8"

Decorator Paper two pieces 5/8" x 3 3/8"

Scor-Tape™

3/4" circle punch

Stamps

Ribbon

Embellishments

**Step 1:** Ensure cardstock is 5 3/4" x 7"

## **Step 2:**

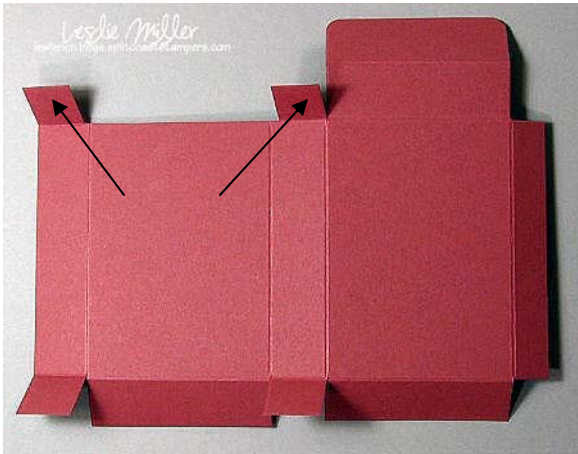
Align paper so the 7" length is along the top. The **left edge of the paper is at the 1/4" mark.** Score at 1", 3 1/2", 4 1/4".

**Align paper with top fence and left fence.** Score at 6 1/2". Pay particular attention to placement of paper before scoring. Refer to diagrams on web site.

## **Step 3:**

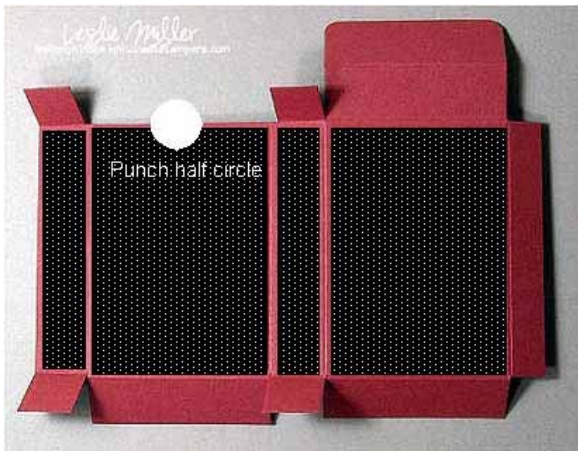
Align paper with the 5 3/4" length is along the top. The **left edge of the paper is at the 1/4" mark.** Score at 1", 4 1/2".

**Align paper with top fence and left fence.** Score at 5". Pay particular attention to placement of paper before scoring. Refer to diagrams on web site.



**Step 4:**

Use the photo as a guide for where you trim and clip. At the two little flaps at the top, marked with arrows, cut away just a smidgen from the score lines. This will allow the top box flap (lid) to slip closed more easily.



**Step 5:**

Glue designer paper to box panels. The score line indentations are on the front of the box. You will be folding with the score line to the outside of the fold. Punch a half circle in the panel on the left end — this will be the front of the box.

Fold into box shape and adhere closed with Scor-Tape™ or any strong adhesive. Finish decorating box as desired.