

Window Box

By Renée Van Stralen
©2008 All Rights Reserved



Supplies



- Scor-Pal®
- One piece cardstock, 9 x 6 3/4"
- One piece cardstock, 1 1/2" x 6"
- One piece patterned paper, 1 1/2" x 9"
- Acetate, 2-7/8" x 4-7/8"
- Watercolour Paper
- Scallop Edge Punch
- Hobby Knife
- Scor-Tape™
- Stamps, Ink, Embellishments

Step By Step



Step 1:

Stamp your image, colour, and cut it out. Here I used the window from Stampin' Up!'s® Level three hostess set "Window Dressings". Set it aside.



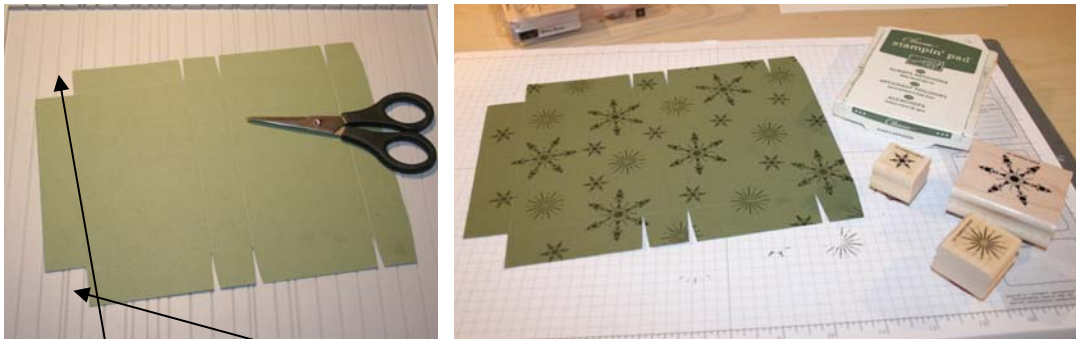
Step 2:

Align the 9" length along the top fence as shown. Score at 1", 4", 5", and 8".



Step 3:

Turn the cardstock 90° and line up with the 1/4" mark on your Scor-Pal. Score at 1" and 6".



Step 4:

The top edge is the 3/4" strip and the bottom is the 1" strip. With your "top" at the top, snip the top left and bottom left squares off. Snip each score line on the top edge and the bottom edge to the first fold line. It is easiest to turn the paper to the embossed side, side with the bump and cut out the bumps. Refer to photo. Stamp your cardstock (I used Stampin' Up!'s "Snow Burst").



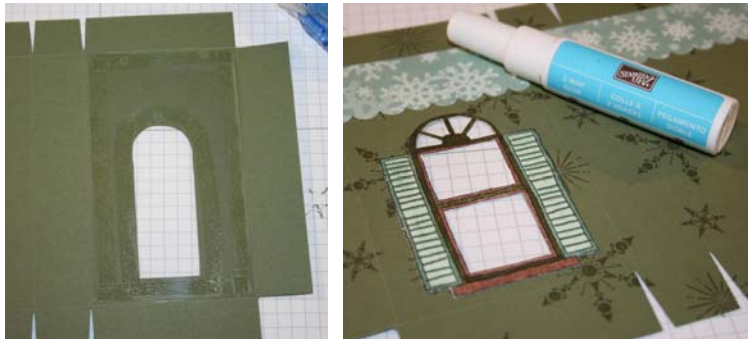
Step 5:

Scallop the edges of the patterned paper. Attach below the fold line below the 3/4" edge. Re-score over the paper.



Step 6:

Decide where the window will go by laying it over the first 3" section on the left. Trace the opening with a pencil and the cut an opening slightly larger using a hobby/craft knife.



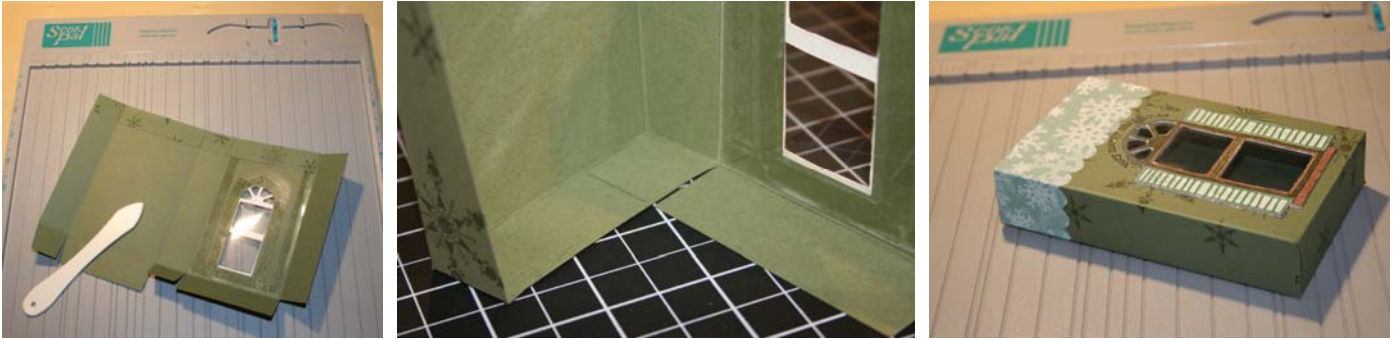
Step 7:

Adhere the acetate to the inside of the box (*you could try vellum instead of acetate!*). Flip and attach the window using Scor-Tape™.



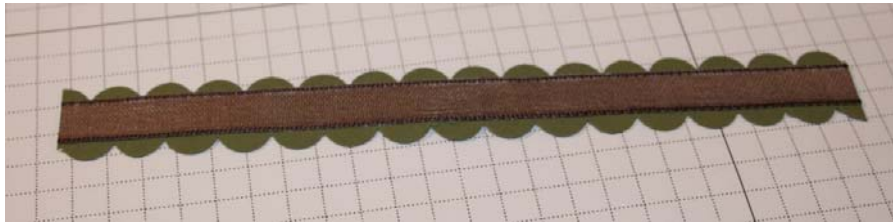
Step 8: *optional*

For the sentiment above the window, I embossed it using Hologram Highlights embossing powder. When embossing near or over acetate, be very careful not too heat too long or the acetate will melt ...



Step 9:

Use the side of the Scor-Tool to commit the creases. Adhere the top $\frac{3}{4}$ " strip to the inside of the box and assemble. I like to have the biggest flap facing the outside (on the bottom), so I make sure to attach the small pieces to the inside of the box!



Step 10:

Scalloped the edges of the $1\frac{1}{2}$ " x 6" piece of cardstock. I also added some ribbon.



Step 11:

Attach the handle to the inside of the box with adhesive and then for added strength, I used a pewter Build-A-Brad (I couldn't get my cropadile in there!). Add any other decorative touch your heart desires and you have a finished little box to put any kind of gift in (like chocolate kisses, candies, bath bombs, tea ...!!).